



BEYOND PHANTOM

Medical Imaging

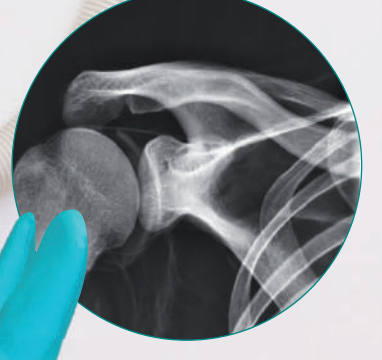
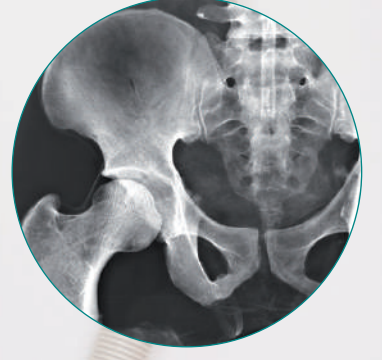
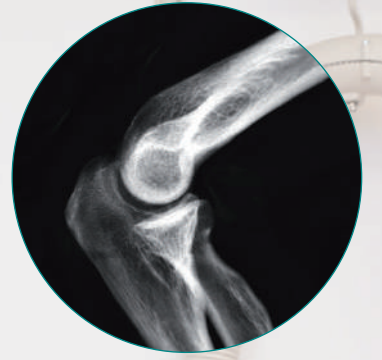


FULL BODY
X-RAY PHANTOM
with real human bones

UNIQUE IN
the world 

Made in  Germany

View product
video here:





Full Body X-Ray Phantom

This model is unique in the world and provides excellent training opportunities for positioning and alignment techniques in projection radiography. It should be part of the basic equipment of any radiographic school. The phantom contains a real human skeleton as well as outlines of larynx, lung, heart and kidneys (organs will create a shadow on the image), which allows taking real X-ray images like in a patient. Using a real skeleton provides even smallest guiding structures which is impossible with a plastic skeleton. During assembly of this phantom we pay special attention to the correct size of joint spaces. All joints are moveably mounted allow positioning in all normal x-ray positions (e.g. frog position, pro- and supination of lower arm). The arms can be moved upwards which makes the phantom suitable for use in all kinds of osseous examinations under CT. Each phantom is hand-made one of a kind; it may differ in size and appearance. Depending on the individual phantom it may have some pathologies, outer shape may differ depending on size of the skeleton. The new version was re-designed in co-operation with a well-known German school for radiographers and fits all needs for education in radiography. This phantom is only sold against proof of medical use. Life size.

Ref.no. 7200



Also Partial phantoms available!



All phantoms including transport cases.

Radiographic positioning doll, plastic skeleton

This model offers all features of model 7200 but includes a plastic skeleton and is due to this only suitable for positioning training. Including a transport and storage case.

Ref.no. 7201 (ohne Abb.)

Got a broken phantom? Have it repaired at our premises in 4 easy steps:

1. Pick-Up Service

The forwarder comes with an empty transport case and collects your phantom.



2. Repair Cost Estimate

We will provide you with a cost estimate. You decide about a repair then.



3. Repair

The phantom will be repaired fast and reasonable priced at our factory. Result: as NEW!



4. Delivery

The "new" phantom will be delivered by the forwarder.



X-Ray thorax

Thorax X-ray phantom, consisting of spine (C6 to L3), thoracic cage, shoulder blades and collar bones, embedded in soft materials. Mounted without metal parts. Organs (lung, heart, kidneys) are present as outlines to create a shadow on the x-ray image. The natural bones used may have, depending on availability, individual pathological changes, minor structural defects or mounting holes.

Ref.no. 7400



X-Ray Phantom Pelvis, flexible

This flexible X-Ray phantom Pelvis contains real human bones and offers the unique opportunity to take real x-ray images. This Phantom consist of a complete pelvis including coccyx, two lumbar vertebrae (L4+L5) and femur stumps. The soft material makes this product ideal for palpation. The natural bone used may have, depending on availability, individual pathological changes, minor structural defects or mounting holes. Delivered with strong transport case.

Ref.no. 7410



X-ray phantom head

Human skull, safely embedded in plastic for easy use. The jaws are slightly open to allow dental panoramic images of the teeth. The neck includes some cervical vertebrae depending on the ordered type. An embedded tread allows the use with a tripod. The jaw may have dental gaps, dental repairs, broken teeth, replaced teeth or other individual features. For detailed information about the available phantoms please contact our sales team.

X-ray phantom head with cervical vertebrae, transparent

Ref.no. 7300

X-ray phantom head with cervical vertebrae, opaque

Ref.no. 7310

X-ray phantom head, transparent

Ref.no. 7320

X-ray phantom head, opaque

Ref.no. 7330



Tripod for X-Ray Phantom head

Very strong tripod for use with the x-ray phantom head. Foldable but stable, holding the head safely in place. With rotatable head for precise positioning of the phantom in the x-ray machine

Ref.no. 7350

X-RAY PART PHANTOMS

All phantoms including transport cases.



Our X-Ray part phantoms give the unique opportunity to take x-ray images of single body parts again and again. The Phantoms include real human bones and allow to take real x-ray images. The models are perfect for schools and education, but also for medical technicians since the same bones can be x-rayed again and again in different settings without the danger of harming a patient.

The bones are embedded in transparent plastic. If requested the phantoms can be coated with opaque color to hide the inner structures. All phantoms are handmade and unique. They may differ in size and shape. Due to production technology there may be discoloring and cracks inside the phantom. This is related to production and is no lack of quality. These phantoms are only sold against a proof of medical use.

X-ray Phantom hand

Hand with wrist.
Transparent
Ref.no. 7210

Opaque
Ref.no. 7215



X-ray Phantom foot

Foot Skeleton with start of lower leg.
Transparent
Ref.no. 7230

Opaque
Ref.no. 7235



X-ray Phantom knee

Part of upper- and lower leg and patella.
Transparent
Ref.no. 7250

Opaque
Ref.no. 7255



X-ray Phantom lower arm

Hand with forearm and elbow.
Transparent
Ref.no. 7220

Opaque
Ref.no. 7225



X-ray Phantom elbow

Part of upper and lower arm.
Transparent
Ref.no. 7260

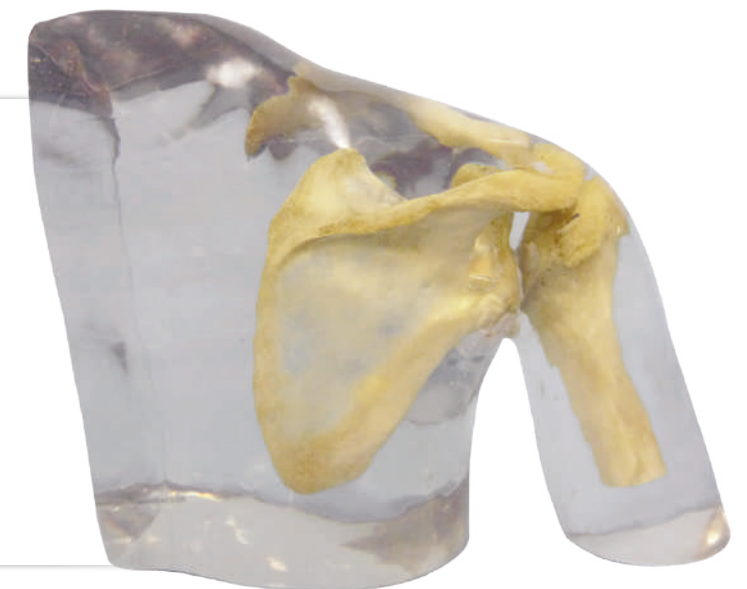
Opaque
Ref.no. 7265



X-ray Phantom shoulder

Humerus with shoulder girdle.
Transparent
Ref.no. 7340

Opaque
Ref.no. 7345



NATURE LINE CT PHANTOMS

Are created from real human patient data and are manufactured with latest technology. Bone and soft tissues are accurately represented with realistic Hounsfield units for all tissues at 120 kVp tube voltage CT imaging. If the phantom is primarily required for CT imaging at different tube voltages (e.g., 100 kVp), the calibration of Hounsfield units can be adapted accordingly upon request. The phantom also yields realistic tissue contrast in X-ray imaging. Air voids are filled with a cellulose-polymer composite of approximately -80 Hounsfield units.

Head CTA-Phantom

The phantom provides a highly realistic simulation of a head and neck CT angiography (with arterial contrast medium enhancement) of a patient with an arteriovenous malformation on the right side. The phantom comes at the original patient size and includes the cervical spine until the baseplate of the fifth cervical vertebra.

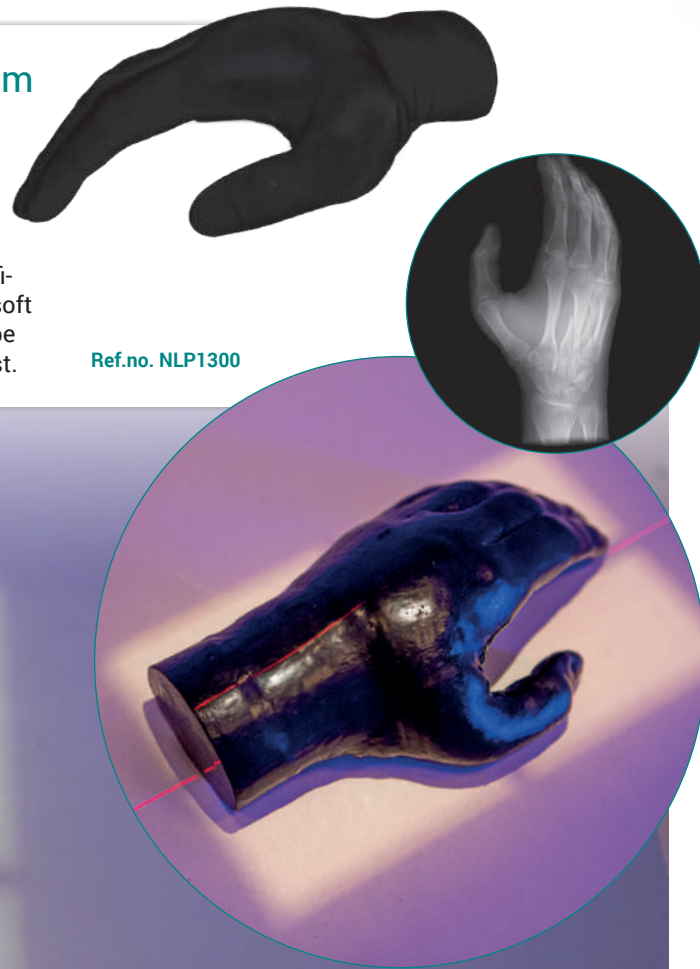
Ref.no. NLP1000



Hand-Phantom

The hand phantom provides an extremely realistic simulation of a hand. Pathologies (e.g. fractures, calcifications, bones and soft tissue tumors) can be integrated on request.

Ref.no. NLP1300

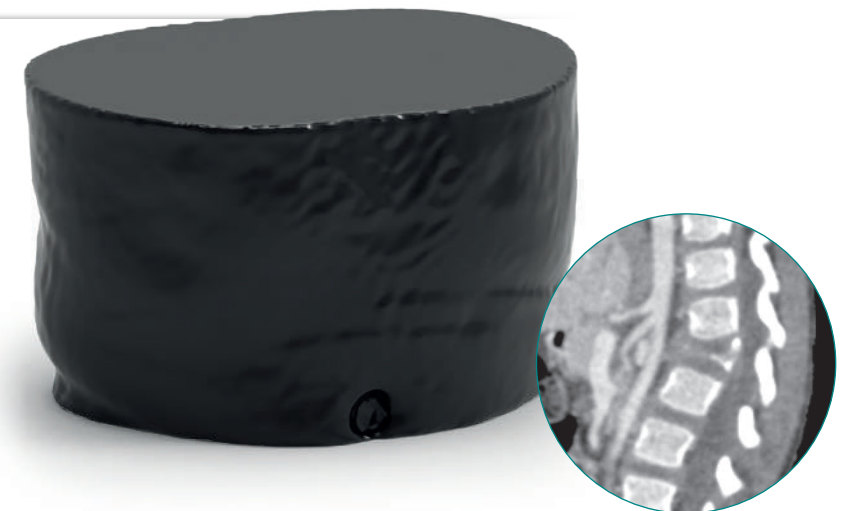


Custom made orders possible!

Child Abdomen Phantom with a Vertebral Fracture

The phantom provides a highly realistic simulation of a contrast medium enhanced abdomen (portal venous phase) of a child with a vertebra plana (first lumbar vertebra). The phantom covers the abdomen from the tenth thoracic to the baseplate of the fourth lumbar vertebra. The liver and both kidneys are fully included.

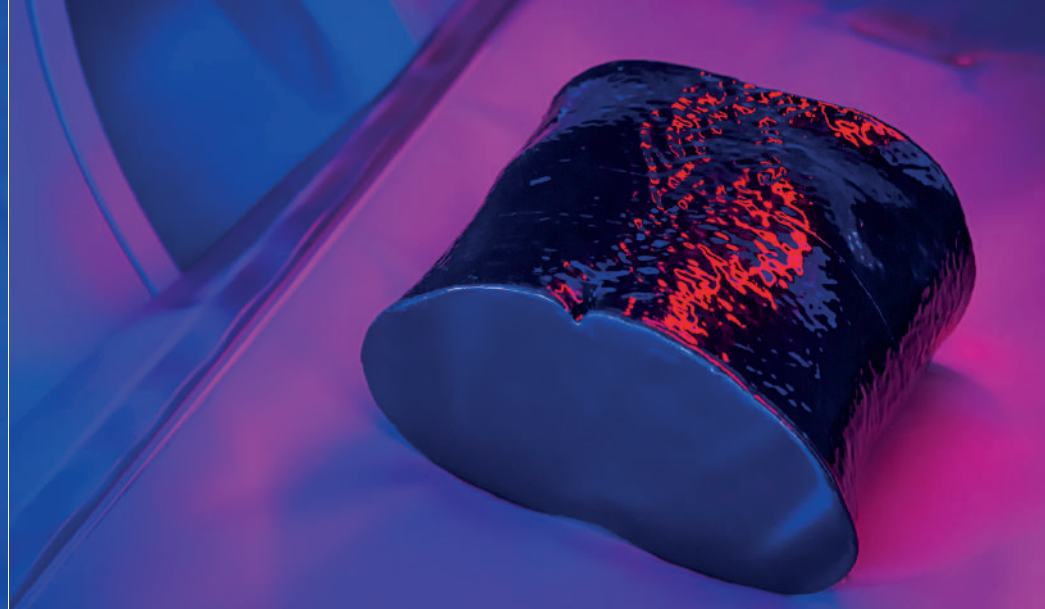
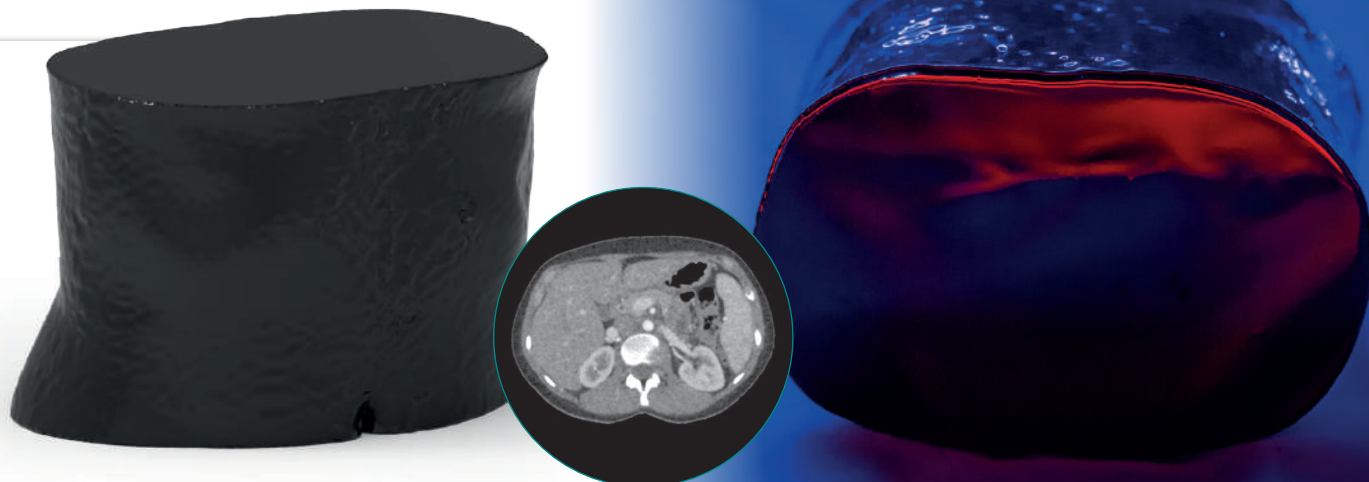
Ref.no. NLP1110



Abdomen-Phantom

The phantom provides a highly realistic simulation of a contrast medium enhanced abdomen (late arterial phase) of a patient. The phantom covers the abdomen from the tenth thoracic to the fourth lumbar vertebra. The liver and both kidneys are fully included.

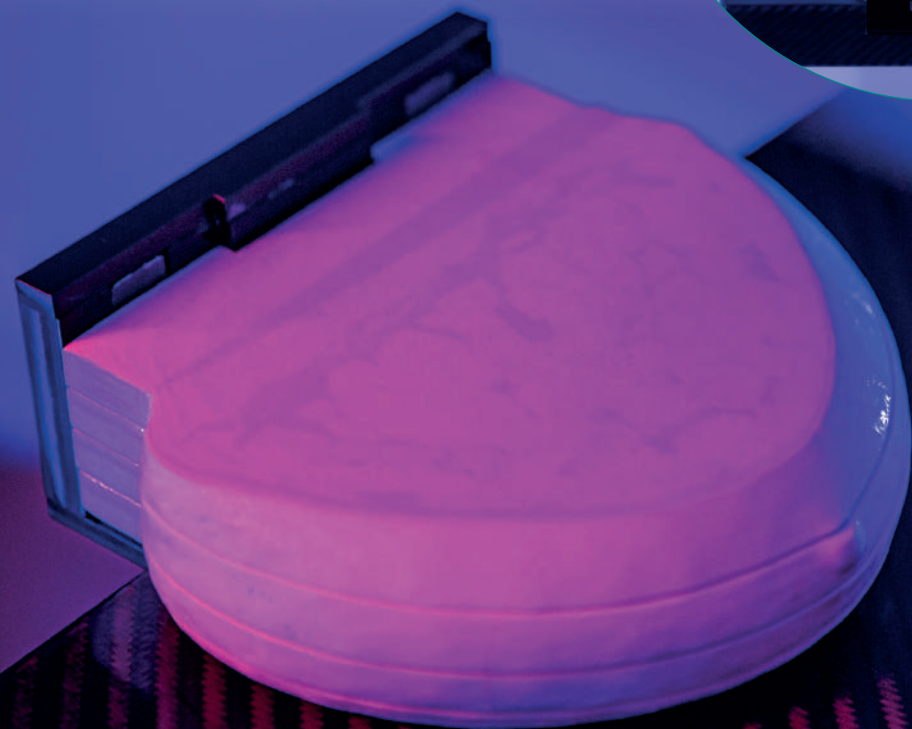
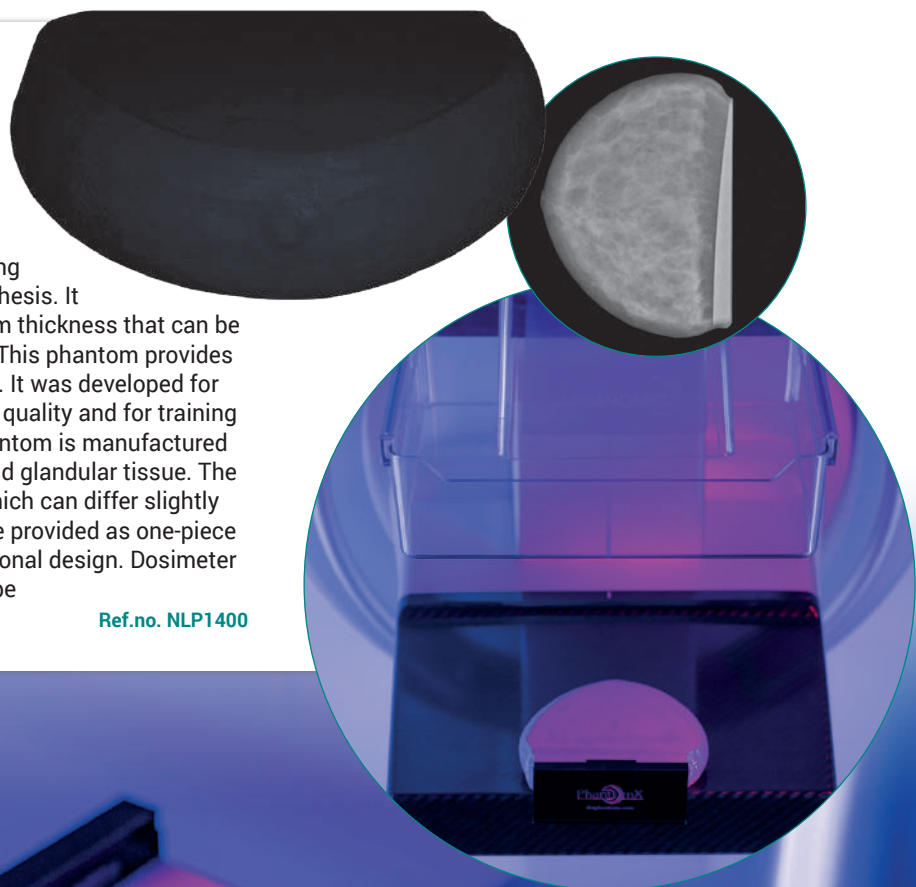
Ref.no. NLP1100



Breast Phantom for Mammography and Breast Tomosynthesis

Breast phantom with adipose and glandular tissue. This breast phantom was designed to simulate breast imaging in mammography and breast tomosynthesis. It represents a compressed breast of 4 cm thickness that can be placed under the compression paddle. This phantom provides a realistic simulation of breast imaging. It was developed for testing and optimizing dose and image quality and for training of medical and technical staff. The phantom is manufactured from virtual data containing adipose and glandular tissue. The models are handmade unique piece, which can differ slightly in size and design. The phantom can be provided as one-piece anthropomorphic phantom or in a sectional design. Dosimeter openings and pathologic features can be included upon request.

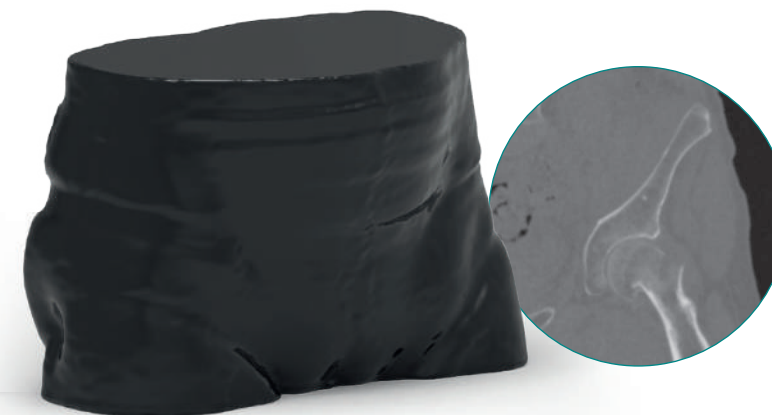
Ref.no. NLP1400



Pelvis Phantom with Femoral Neck Fracture

The phantom provides a realistic simulation of a male pelvis without contrast medium enhancement and with a slightly dislocated femoral neck fracture on the left side. The phantom includes the entire pelvis and the fifth lumbar vertebra.

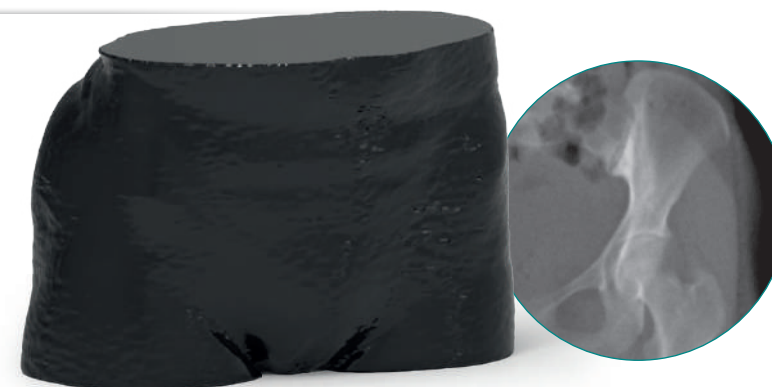
Ref.no. NLP1200



Pelvis Phantom with Coxarthrosis

The phantom provides a realistic simulation of a female pelvis without contrast medium enhancement and with advanced hip osteoarthritis on the right side. The phantom includes the entire pelvis and the fifth lumbar vertebra.

Ref.no. NLP1210



Foot-Phantom

The foot phantom provides an extremely realistic simulation of a foot. Pathologies (e.g. fractures, calcifications, bones and soft tissue tumors) can be integrated on request.

Ref.no. NLP1310





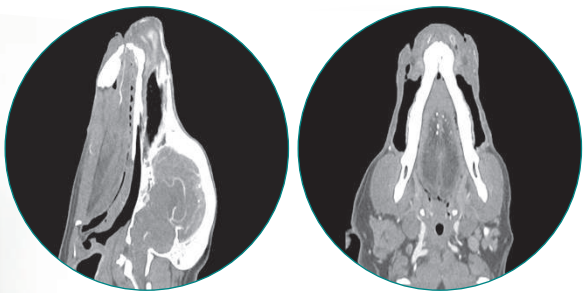
CT/X-Ray Phantom Dog

The phantom provides a realistic simulation of a dog without contrast medium enhancement. Bone and soft tissues are accurately represented with realistic Hounsfield units for all tissues at 120 kVp tube voltage CT imaging. Air voids including lung tissue are filled with a cellulose-polymer composite of approximately -80 Hounsfield units. If the phantom is primarily required for CT imaging at different tube voltages (e.g., 100 kVp), the calibration of Hounsfield units can be adapted accordingly upon request. The phantom also yields realistic tissue contrast in X-ray imaging.

Ref.no. VET14000



Custom made orders possible!

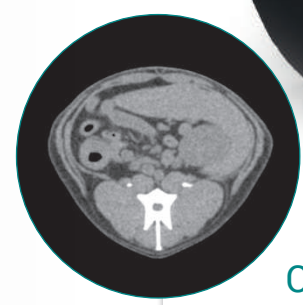
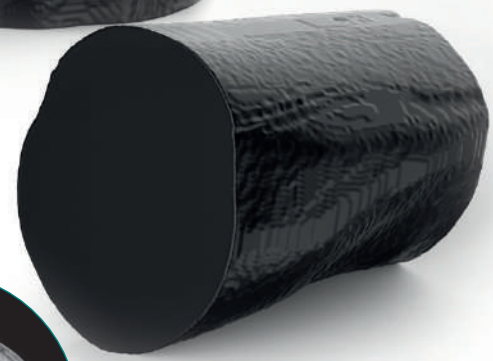
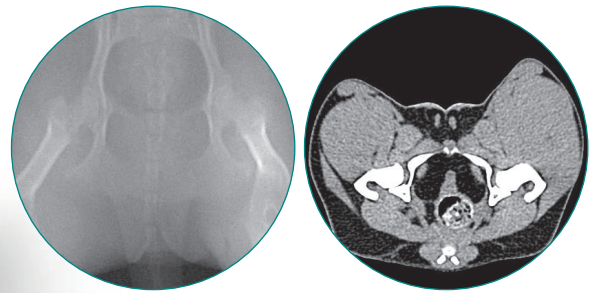


CT/X-Ray Phantom Dog Head

Ref.no. VET14010

CT/X-Ray Phantom Dog Pelvis

Ref.no. VET14030



CT/X-Ray Phantom Dog Abdomen

Ref.no. VET14020



Rick Lee
Director | Global Sales Department
103 Banyon Tree Ln,
Cary NC 27513, USA
Tel. +1 984-777-0380
Email : info@beyondphantom.com